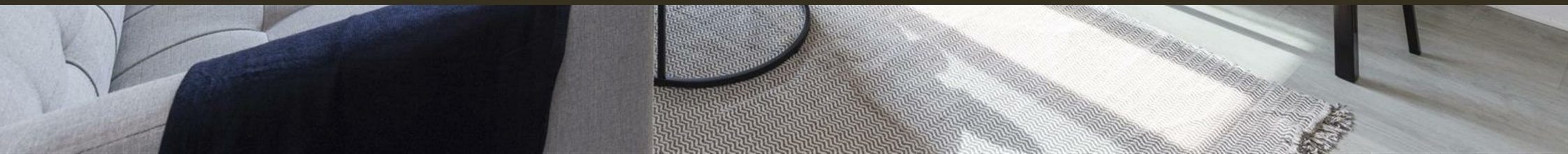




Woods House, 7 Gatliff Road  
London SW1W

GARTON JONES.COM



Woods House, 7 Gatliff Road  
London, SW1W

£450,000 Leasehold

A ONE DOUBLE BEDROOM apartment for sale of approx. 491 sq.ft (45.63 sq.m) in Woods House, one of the buildings forming the popular GROSVENOR WATERSIDE development in Chelsea. This property has an open plan reception room, a modern kitchen, bathroom and storage including built in wardrobes to the bedroom. There is a GYM & SPA on site (payable), an On-site Sainsbury's Local, coffee shop and private kids club. SLOANE SQUARE & VICTORIA station with Gatwick Express are within walking distance.

Available via Garton Jones' on-site office at Grosvenor Waterside (underneath Bramah House).

EWS1 complete  
Service charges: approx. £3,999.12 per annum (includes hot & cold water, CH & boiler breakdown cover)  
Leasehold: 125 Years from March 2009 (expires 2134, approx. 112 years remaining)

Westminster City Council (band D).

EPC certificate available on request.

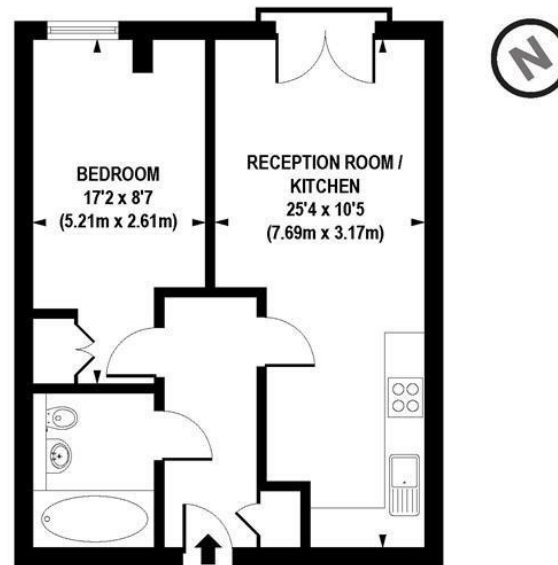
- 491 Sq.ft (45.63 Sq.m)
- One Double Bedroom
- Open Plan Reception Room
- Modern Kitchen
- Modern Bathroom
- 24 Hour Concierge
- EWS1 Completed
- On-Site Sainsbury's & Coffee Shop
- On-Site Creche & Private Kids Club
- Walking Distance to Sloane Square

GARTON JONES.COM

8 Gatliff Road  
Grosvenor  
Waterside  
Chelsea  
London  
SW1W 8DP

Sales +44 (0) 20 7730 5007  
gws@gartonjones.com  
www.gartonjones.com





**APPROX. GROSS INTERNAL FLOOR AREA 491 sq. ft / 45.63 sq. m**

Floorplan is for illustrative purposes only and is not to scale.  
Every attempt has been made to ensure the accuracy of the floorplan shown, however all measurements,  
fixtures, fittings and data shown are an approximate interpretation for illustrative purposes only.  
Liability for errors, omissions or mis-statement through negligence or otherwise is hereby excluded.

**CP CREATIVE**  
PROPERTY MARKETING

